



# I. PEDESTRIAN RAILWAY BRIDGE

---

## Battipaglia

## PROJECT INFORMATION



### PROJECT

The pedestrian bridge of Battipaglia train station is the longest pedestrian bridge in Europe.

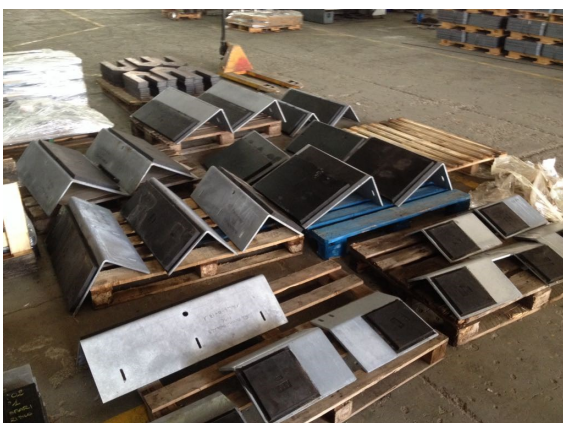
Over 100 meters long, is supported by two reinforced concrete piers.

The bridge has a geometry similar to modern high-speed train.

SOMMA supplied for the following job anti-seismic devices ISI h650/96 F40D conform to the EN15129 as well as to the national standard FS44e.

The devices are dielectric, as required by the railway regulations.

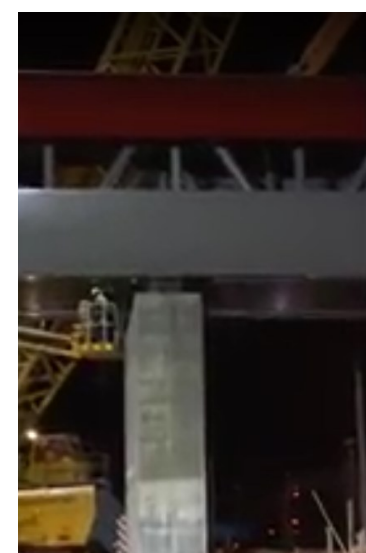
Furthermore, 8 anti-seismic elastic buffer type ELB have been supplied, complying with EN 1337 and IFS 44e.



[Serie ELB](#)



[Serie ISI](#)



[Serie ISI](#)